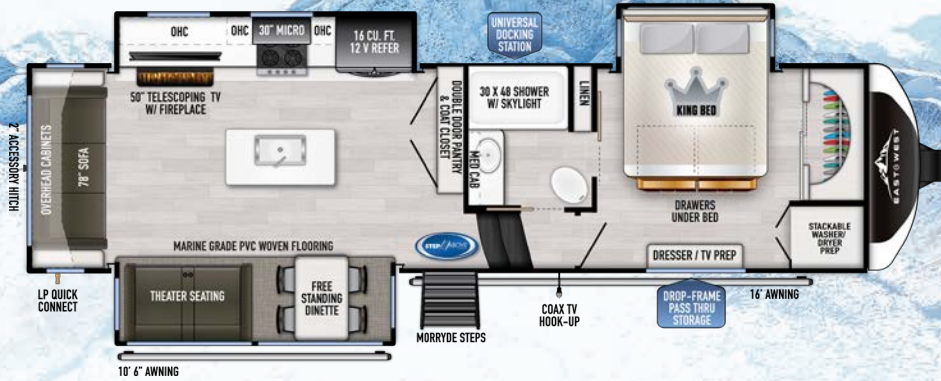


Alhara

FIFTH WHEELS



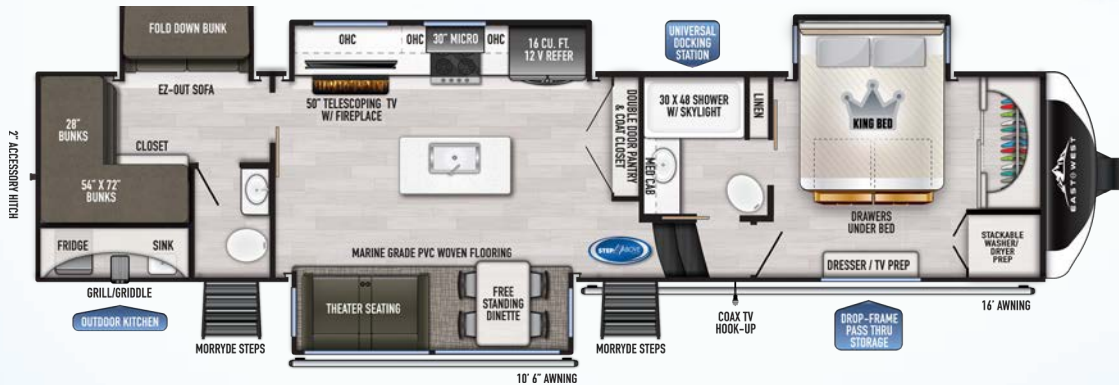
HITCH (LBS.): 2,185 U/VW (LBS.): 11,759 CCC (LBS.): 3,741 LENGTH: 34' 9"
 EXTERIOR HEIGHT: 13' 5" WIDTH: 101" TANKS (F/G/B): 63 / 90 / 45 AWNING: 16' & 10' 6"

325RL



HITCH (LBS.): 2,273 U/VW (LBS.): 12,345 CCC (LBS.): 3,928 LENGTH: 37' 4"
 EXTERIOR HEIGHT: 13' 5" WIDTH: 101" TANKS (F/G/B): 63 / 90 / 45 AWNING: 18' & 10' 6"

365RL



HITCH (LBS.): TBD U/VW (LBS.): TBD CCC (LBS.): TBD LENGTH: TBD
 EXTERIOR HEIGHT: 13' 4" WIDTH: 101" TANKS (F/G/B): 63 / 90 / 90 AWNING: 16' & 10' 6"

378BH-OK



AHARA STANDARDS & OPTIONS

AHARA LUXURY PACKAGE

- ▶ 101" Wide Body Chassis w/ Drop-Frame Pass Thru Storage Compartment
- ▶ 6 Point Hydraulic Automatic Leveling System
- ▶ 2nd Adjustable Power Awning w/ LED Lights
- ▶ MORryde Step Above® Entry Steps
- ▶ Solid Surface Kitchen Countertops
- ▶ Seamless Fiberglass Shower
- ▶ 50" LED Television
- ▶ HDMI/AM/FM Bluetooth Entertainment System w/ Sound Bar Speakers
- ▶ 30" Over-The-Range Residential Microwave
- ▶ Metal Slam Latch Cargo & LP Doors
- ▶ Universal All-In-One Docking Station
 - Outside Shower w/ Quick Connect Hose & Spray Nozzle
 - Waste Tank Flush
 - PowerFill Fresh Water Tank for Dry Camping
 - Exterior Water Pump Switch
 - Siphon Fill or Sanitize Fresh Water Tank From Vessel Using Water Pump
 - EZ Winterization Valve
 - Battery Kill Switch
- ▶ 10 Gallon Water Heater
- ▶ Stackable Washer/Dryer Prep
- ▶ Roof Mounted Solar Prep

AHARA 4 SEASONS PACKAGE

- ▶ High Efficiency Triple A/C System
- ▶ Ductless Flooring Throughout Living Area
- ▶ 40,000 BTU High Capacity Furnace
- ▶ 48" Wide 5,100 BTU Electric Fireplace
- ▶ 12v Heat Pads on Holding Tanks
- ▶ Heated, Insulated & Enclosed Underbelly & Dump Valves w/ Circulating Heat
- ▶ Radiant Technology Composites™ Insulation in Roof, Front Cap & Underbelly
- ▶ Formaldehyde Free Fiberglass Insulation in Roof, Front Cap & Main Floor
- ▶ Laminated Sidewalls, Slide-out End Walls, Slide-out Roofs, and Rear Wall w/ Azdel® Composite Panels & 1.5 LB Block Foam Insulation
- ▶ Dual Attic Vents

AHARA Towing Package

- ▶ Aerodynamic Fiberglass Front Cap
- ▶ Seamless High Visibility LED Front Cap Lights
- ▶ LED Marker Lights

- ▶ LED Tail Lights w/ Back-Up Lights
- ▶ MORryde CRE 3000® Suspension
- ▶ MORryde Heavy Duty Shackles & Wet Bolt Kit
- ▶ Dexter Gladiator Thick Wall 7,000 LB Axles w/ Nev-R-Adjust Brakes
- ▶ Dexter Heavy Duty 4,000 LB Springs
- ▶ Nitro Filled G-Range Tires
- ▶ Under Carriage Spare Tire & Carrier
- ▶ LionsHead Specialty Tire & Wheel "1 Year No Excuses Guarantee" Program
- ▶ Rear View Camera Prep
- ▶ 2" Rear Accessory Hitch
- ▶ Driver's Side Automatic Leveling System Control Box

EXTERIOR

- ▶ Hi Gloss Gel Coated Fiberglass Exterior
- ▶ Deep Tint Safety Glass Windows
- ▶ Residential Wood Framed Roof
- ▶ Factory Installed Roof Ladder
- ▶ 5/8" Tongue & Groove Plywood Floor Decking
- ▶ 2" Thick Double Welded Aluminum Framed Sidewalls, Rear Wall, Front Bulkhead Wall & Slide-Out Rooms
- ▶ Double Welded & Fully Framed Window, Entry Door, Cargo Door and Slide-out Openings
- ▶ 3" x 2" Double Welded Aluminum Floor Joists (16" On Center)
- ▶ 50 AMP Electrical Service
- ▶ Detachable 50 AMP Power Cord
- ▶ 60 AMP Converter w/ Charge Wizard Technology & Lithium or Lead Acid Battery Selector Switch
- ▶ 30" Wide x 78" Tall Entry Door
- ▶ Adjustable Power Awning w/ LED Lights
- ▶ High Capacity Water Pump w/ Interior & Exterior Switch
- ▶ EZ Access Low Point Drain Valves
- ▶ 30 LB LP Bottles (2)
- ▶ LP Quick Connect
- ▶ Winegard Air 360+ TV Antenna w/ WiFi Prep
- ▶ Exterior Cable/Satellite Hookup in Pass Thru Storage or Outside Kitchen Compartments
- ▶ LED Motion Sensor Lights in Pass Thru Storage and Outside Kitchen Compartments
- ▶ Safety Light Kit: Entry Steps
- ▶ Marine Grade LED Light at Sewer Termination

INTERIOR

- ▶ Barrington Maple Interior Décor
- ▶ Residential Shaker Style Cabinet Doors

- w/ Hidden Hinges
- ▶ Solid Core Cabinet Stiles
- ▶ Pre-Drilled & Screwed Cabinetry
- ▶ Ball Bearing Full Extension Drawer Guides
- ▶ Wall Hugger Theatre Seats
- ▶ Wall Mounted Free Standing Dinette w/ 4 Chairs
- ▶ 6' 6" Tall Main Slide-out Interior Height
- ▶ Slow Rise™ Roller Shades
- ▶ Custom Residential LED Kitchen Pendant Lights (2)
- ▶ Custom Residential LED Dinette Light
- ▶ LED Motion Sensor Lights in Bathroom
- ▶ Hallway & Bedroom Closets
- ▶ Vinyl Flooring in Living Area, Kitchen, Bathroom & Bedroom (No Carpet)
- ▶ Marine Grade Woven PVC Flooring in Flush Floor Slide-Outs
- ▶ Deep Seated Stainless Steel Farmhouse Sink
- ▶ Roll Up Stainless Steel Drying Rack
- ▶ Residential High Rise Faucet w/ Pull-Down Sprayer
- ▶ Kitchen 12v MAXXAIR MAXXFAN®
- ▶ Pull Out Trash Can in Kitchen Island
- ▶ 16 Cubic Foot 12v Refrigerator
- ▶ 21" Oven & Range w/ Flush Mount Range Cover
- ▶ 6' 6" Tall Main Bathroom Interior Height
- ▶ Porcelain Toilet w/ Foot Flush
- ▶ Skylight Over Shower
- ▶ Bathroom 12v Power Vent Fan
- ▶ Extra Large Seamless Lav Top w/ Undermounted Sink
- ▶ Large Medicine Cabinet w/ Mirror
- ▶ 70" x 80" Serta® King Bed w/ Residential Bedspread
- ▶ Residential Headboard with LED Mood Lighting
- ▶ Bedside USB and Electrical Outlets
- ▶ Bedside Night Stands
- ▶ Bed Base Drawers
- ▶ Bedroom Cable/Satellite Hookup

OPTIONS

- ▶ 12 Cubic Foot 4 Door Gas/Electric Refrigerator
- ▶ Wall Mounted Booth Dinette w/ 2 Benches
- ▶ Generator Prep
- ▶ Solar Package (320 Watt Solar Panel w/ 50amp MPPT Controller and 2000 Watt Inverter)
- ▶ Dual Pane Windows
- ▶ Slide Toppers
- ▶ Super Duty Towing Package (MORryde Rubber Pin Box & Dexter Hydraulic Disc Brakes)



24/7 EMERGENCY
ROADSIDE ASSISTANCE
WITH VEHICLE PURCHASE*

TOWING
JUMP-STARTS
TIRE CHANGES
FLUID DELIVERY
LOCKOUT
SERVICE

WINCH-OUT
MOBILE MECHANIC
TECHNICAL
SUPPORT
DEALER LOCATOR
SERVICES



*VALID FOR 1 YEAR FROM DATE OF PURCHASE



Learn More
Scan this barcode using a QR Reader on your smart phone to learn more about Forest River.



A Berkshire Hathaway company.

3000 COUNTY ROAD 6 WEST ELKHART, IN 46514
WWW.EASTTOWESTRV.COM 574.264.6664

FREE MEMBERSHIP
to Forest River Owners' Group

www.forestriverfrog.com



CUSTOMER SATISFACTION



www.ForestRiverBuyLocal.com



PRE-DELIVERY INSPECTION FACILITY

20,000 square feet of quality assurance. The bare essentials for a premium product. This state-of-the-art facility gives immediate daily feedback to production for quality assurance in every unit built.

Specification Definitions

GVWR (Gross Vehicle Weight Rating) - is the maximum permissible weight of the unit when fully loaded. It includes all weights, inclusive of all fluids, cargo, optional equipment and accessories. For safety and product performance do NOT exceed the GVWR.

GAWR (Gross Axle Weight Rating) - is the maximum permissible weight, including cargo, fluids, optional equipment and accessories that can be safely supported by a combination of all axles.

UVW (Unloaded Vehicle Weight) - is the typical weight of the unit as manufactured at the factory. It includes all weight at the unit's axle(s) and tongue or pin and LP Gas. The UVW does not include cargo, fresh potable water, additional optional equipment or dealer installed accessories.

*Estimated average based on standard build optional equipment.

CCC (Cargo Carrying Capacity)** - is the amount of weight available for fresh potable water, cargo, additional optional equipment and accessories. CCC is equal to GVWR minus UVW. Available CCC should accommodate fresh potable water (8.3 lbs per gallon). Before filling the fresh water tank, empty the black and gray tanks to provide for more cargo capacity.

** Estimated average based on standard build optional equipment

Each Forest River RV is weighed at the manufacturing facility prior to shipping. A label identifying the unloaded vehicle weight of the actual unit and the cargo carrying capacity is applied to every Forest River RV prior to leaving our facilities.

The load capacity of your unit is designated by weight, not by volume, so you cannot necessarily use all available space when loading your unit.

YOUR *Ahara* DEALER

All information contained in this brochure is believed to be accurate at the time of publication. However, during the model year, it may be necessary to make revisions and Forest River, Inc., reserves the right to make all such changes without notice, including prices, colors, materials, equipment and specifications as well as the addition of new models and the discontinuance of models shown in this brochure. Therefore, please consult with your Forest River dealer and confirm the existence of any materials, design or specifications that are material to your purchase decision. Litho U.S.A. FOR 1950 PAW-7021.B.05