



Bravado



Bravado

MOTORHOMES



EastToWestRV.com/Bravado
A DIVISION OF FOREST RIVER



Luxury Redefined. Adventure Unleashed.
Built on F600 4X4 chassis

Bravado isn't just a name - it's a lifestyle. Meaning confidence and courage, Bravado embodies the spirit of adventure with a Class C motorhome designed to inspire your next journey.



Bravado maximizes every inch of space to provide unparalleled comfort and convenience. From luxe finishes, modern amenities, and smart storage solutions to sleek kitchens, cozy living areas and restful sleeping quarters, every detail has been designed with your comfort in mind.

BRAVADO TOP FEATURES

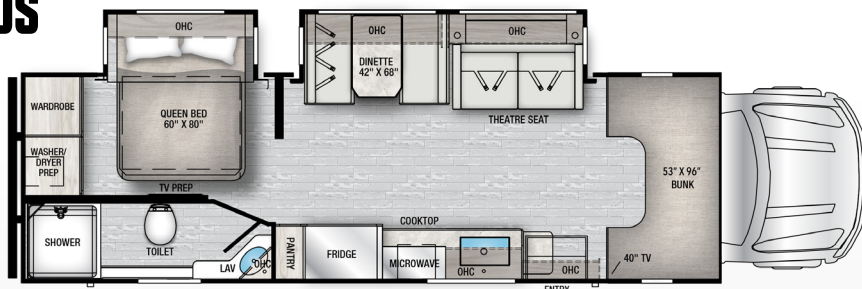
- Slide-out hidden pantry with three wide shelves and drawer for storage
- 36" x 36" shower with Spa Tower with jets and removable shower head
- Side-hinge, slam-latch baggage doors with Rotocast storage
- Pull-out spray faucet and deep, stainless steel sink
- Azdel composite sidewall and slide box construction
- 12V heat pads on Black/Grey tanks
- 40" LED Smart TV in living room and main bedroom
- Premium powered theatre seating
- Maxx Air Fan with remote control and rain sensor
- OTR convection microwave
- Powered, auto-extending entry steps
- Tankless, on-demand water heater
- Dicor DiFlex II TPO roof membrane
- Apple CarPlay/Android auto ready

- Automotive-grade, full-body exterior paint
- Flush-mounted induction cooktop
- 50" x 96" cab-over-bunk mattress
- Soft close cabinets and drawers
- Washer/Dryer prep - 33DS only
- XL dinette storage drawers
- Solid surface countertops
- Slide-out awning toppers
- Power cord storage reel
- 16 cu. ft. 12V refrigerator
- 12V USB charge ports
- 30,000 BTU furnace
- 80 lb propane tank
- Outdoor shower
- 32" outdoor TV



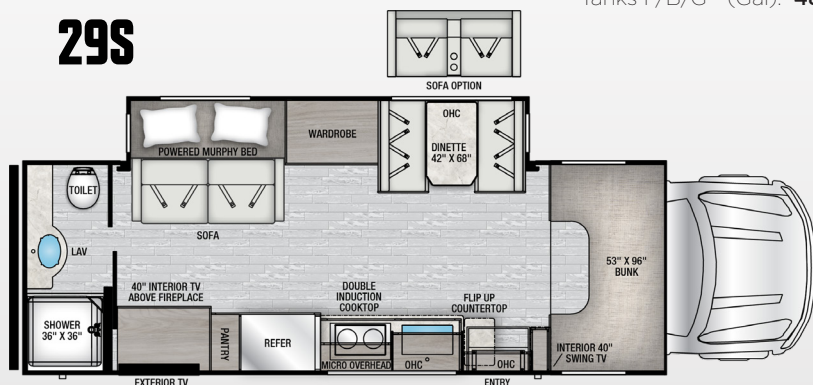
33DS

Bravado delivers the perfect blend of luxury, functionality, and style to elevate your RV experience.



Hitch Rating (LBS): **14,500** Dry Weight (LBS): **17,400** Exterior Length: **34' 1"**
 Exterior Height: **12' 3"** Exterior Width: **101"** Interior Height: **84"** GVWR (LBS): **22,000**.
 Tanks F/B/G - (Gal): **48/45/45** Wheelbase: **238"** CCC (LBS): **4480**

29S



Hitch Rating (LBS): **TBD** Dry Weight (LBS): **TBD** Exterior Length: **TBD**
 Exterior Height: **TBD** Exterior Width: **TBD** Interior Height: **TBD** GVWR (LBS): **TBD**.
 Tanks F/B/G - (Gal): **TBD** Wheelbase: **TBD** CCC (LBS): **TBD**

Feel confident knowing you've chosen a motorhome that combines premium craftsmanship with cutting-edge innovation. Be courageous while traveling knowing Bravado is built to take you anywhere your heart desires.



F600 4X4 CHASSIS

10-Speed SelectShift Automatic Transmission
 6.7L Power Stroke V8 Turbo Diesel

330 Horsepower
 950 lb/ft Torque



BRAVADO LUXURY PACKAGE

- 4-point hydraulic automatic leveling system
- Upgraded professional appliance package
- 8,000-watt diesel generator with inline auto-transfer switch
- One-piece molded front cap with automotive windshield
- Frameless dual pane windows with integrated day/night shades
- Luxury, legless Girard awning with LED light strip
- High-resolution side and rear camera system
- 15,000 BTU ducted main A/C with heat pump
- Computer-balanced driveshaft
- Additional 13,500 BTU A/C
- Extended side view mirrors
- (2) Expion 360 Lithium batteries
- Custom running boards
- 400-watt solar package
- 2,000-watt inverter
- Bilstein shocks
- Hellwig sway bar
- 14,500 lb hitch
- 50-amp service
- Smart LED TVs

The adventure you've been waiting for starts now!



TRAVEL TRAILERS



TOY HAULERS



FIFTH WHEELS



MOTORHOMES

EAST TO WEST TAKES PRIDE IN OUR FIVE GUIDING PRINCIPLES AND OUR CORPORATE PHILOSOPHY
which focuses on people working together to create high quality, value-added products that deliver the ultimate RV experience.

Sustainable Manufacturing

An important objective to our strategy and operations is to implement economically sound manufacturing processes to reduce/recycle waste & conserve energy and natural resources.

Corporate & Social Responsibility

We foster a business environment in which we focus on and practice:

- Ethical Labor Practices
- Teamwork
- Philanthropy
- Volunteering

Culture & Values

We are a forward thinking company committed to fostering a culture of teamwork. By being transparent, we encourage our employees to think outside the box and make a difference!

Quality & Construction

Our team takes pride in each unit we build. Our manufacturing standards and point to point inspections ensure each EAST TO WEST brand is built to the same quality specifications every time.

Our Commitment

We strive to provide the highest quality products at the best possible price to our customers. We invite you to be a part of the EAST TO WEST family and we look forward to exceeding your expectations!

EACH NEW FOREST RIVER PURCHASE PROVIDES:

- ✓ Pre-delivery Inspection.
- ✓ Digital Owner's Manual.
- ✓ Free Membership to Forest River Owners Group (FROG).
Learn more at www.forestriverfrog.com.
- ✓ A Contribution to Care Camps Foundation www.carecamps.org.
- ✓ 1 Year Free Roadside Assistance from Date of Purchase.



SPEC DEFINITIONS:

Scan on your smartphone to learn RV terminology and more!



LEARN MORE:

Scan this QR code with your mobile device to learn more about Forest River.



YOUR **BRAVADO** DEALER

All information contained in this brochure is believed to be accurate at the time of publication. However, during any model year, it may be necessary to make changes to the manufacturing process of the units and information in this brochure. Your unit may differ from the information in this brochure due to any changes in the manufacturing process and equipment. Forest River, Inc., reserves the right to make all such changes without notice, including prices, colors, combinations, materials, equipment and specifications of any model as well as the addition of new models and the discontinuance of models shown in this brochure. Therefore, please consult with your Forest River dealer and confirm the availability of any materials, combinations, designs, or specifications that are meaningful to your purchase decision.
© 2025 Bravado, a Division of Forest River, Inc., a Berkshire Hathaway Company. All Rights Reserved. Forest River, Inc. 1/25 ETW 2699